

# PRODUCT CATALOG

## SPRING 2023



**JAPAN QUALITY**

*Manufactured in Japan, supported in Japan*

# BRAND NEW D3.





MADE IN JAPAN

*New*



**YS-D3 DUO**

03129 BLACK

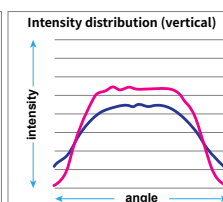
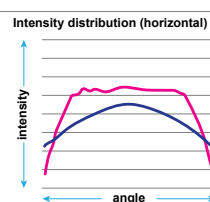
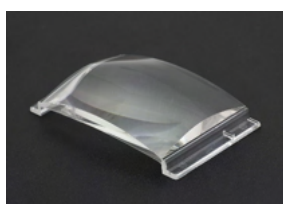
### Shooting with the Optimum Flash Level Equipped with RC mode

The RC mode conforming to the "SYSTEM Wireless RC Flash System" is equipped. The flash output is optimally controlled when combined with the target digital camera.



### Aspherical toroidal lens

An aspherical toroidal lens placed in front of the light-emitting tube provides uniform light distribution characteristics all the way to the periphery, making it ideal as an external light source.



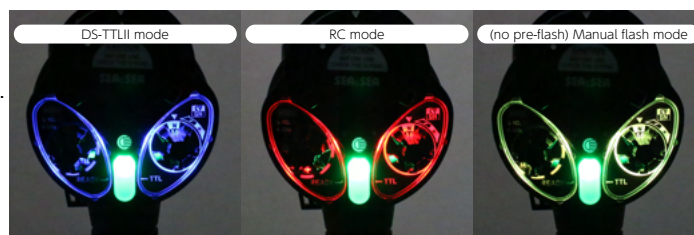
Comparison of illuminance distribution when only light source is used and when an aspherical toroidal lens is used (Simulation results)

Without aspheric toroidal lens

Aspherical toroidal lens available

### Backlit panel for excellent visibility

The color of the indicator on the back changes for each mode. The dial position is clearly visible even during night diving.



Guide Number

33

Without diffuser

Illumination Angle

100°×110°

With diffuser

Depth of pressure

100m

Color Temperature

5500K

With diffuser

Recycle Time

1.7sec.

When using Ni-MH batteries

Number of luminous flashes

220times

When using Ni-MH batteries

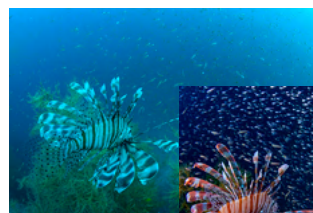




## YS-D3 MKII LIGHTNING

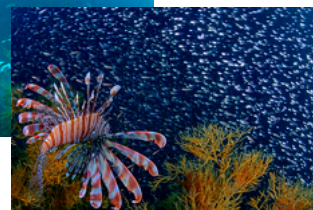
03123 BLACK

Powerful luminescence equivalent to a maximum of approximately 509,600 lumens.



▲ Natural light

▼ with YS-D3mkII



Guide Number

33

Without diffuser

Illumination Angle

100°×110°

With diffuser

Depth of pressure

100m

Color Temperature

5500K

With diffuser

Recycle Time

1.7sec.

When using Ni-MH batteries

Number of luminous flashes

220times

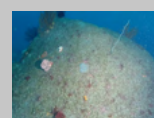
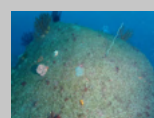
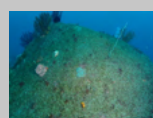
When using Ni-MH batteries



## YS-01 SOLIS

03124 BLACK

Equipped with DS-TTLII, same as higher-end models



Example of DS-TTLII Plus correction (using one light on the right side)



Guide Number

20

Without diffuser

Illumination Angle

110°×110°

With diffuser

Depth of pressure

75m

Color Temperature

5250K

With diffuser

Recycle Time

1.9sec.

When using Ni-MH batteries

Number of luminous flashes

300times

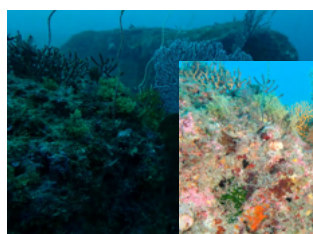
When using Ni-MH batteries



## YS-03 SOLIS

03125 BLACK

High cost performance with the ultimate in simplicity



▲ Natural light

▼ with YS-03SOLIS



Guide Number

20

Without diffuser

Illumination Angle

110°×110°

With diffuser

Depth of pressure

75m

Color Temperature

5250K

With diffuser

Recycle Time

1.9sec.

When using Ni-MH batteries

Number of luminous flashes

300times

When using Ni-MH batteries

## Snoot

DUO YS-D3

28115



An adapter that turns a strobe light into a spot light. An internal prism allows the optical axis of the target light to be perfectly aligned with the optical axis of the strobe light. The beam aperture is 25 mm.

## Dome Diffuser

DUO YS-D3

28116



Beam angle becomes 150° x 170°, which is useful when using a fish-eye lens or when lighting with soft light. Guide number is reduced by -1.5 EV. Can be attached and detached underwater.

## Flash Prism

DUO YS-D3

50127



Light guiding prism for emitting light from YS-D3mkII without using a fiber-optic cable. (Only manual light emission is supported.) Effective for backlit photography, etc.

## Strobe Ball Base 35

DUO YS-D3

28117



Ball base tilted 35° compared to the straight type. This makes it easier to lower the strobe light emitting surface to the rear, making it suitable for shooting when using a dome port.

## Strobe YS Base

DUO YS-D3

28114



YS type mounting base. Combined with the SA8 strobe head series, it can be used as a starting point for various lighting developments.

## Strobe Cover

DUO YS-D3

50291



The surface is made of mesh skin with fine mesh finish. Backside is neoprene strobe cover.

## Diffuser Product Accessory

DUO YS-D3

28118



When installed, the beam angle is widened to 100° x 110° to soften the edges of light distribution. Light intensity is reduced by -0.5 EV.

## Diffuser Product Accessory

YS-01 YS-03

28109



When installed, the beam angle increases to 110° x 110° to soften the edges of the light distribution.

## Strobe Mask Set

50109

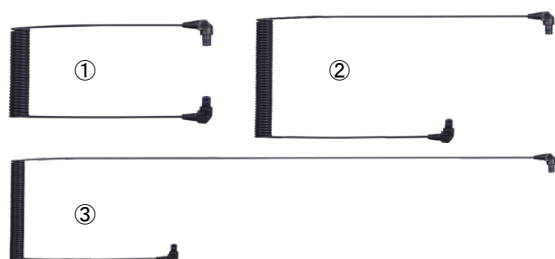


Mask and fiber-optic cable are attached to the built-in flash section of a compact digital camera housing.

\*The mask must be cut to fit the housing.  
\*Some models cannot be used.

## Fiber Optic Cable II

DUO YS-D3 YS-01 YS-03



Highest quality fiber optic cable with multiple cores of 613 cores in one fiber. Radiation loss is small even when the fiber is bent and the optical axis is misaligned inside, and signals emitted from the camera's built-in flash can be transmitted to the strobe side with super sensitivity.

- ①Fiber-optic cable II S/2 [Total length]310mm [50135](#)
- ②Fiber-optic cable II M/2 [Total length]453mm [50128](#)
- ③Fiber-optic cable II L/2 [Total length]725mm [50133](#)

### Fiber-optic cable O-ring (6pcs)

92974



## Syncro Code

DUO YS-D3 YS-01 YS-03



A sync cord is necessary for electrical connection to Nikonos 5-pin type underwater strobes as well. In addition to the standard Sync Cord/N, there is a Dual Sync Cord/N for dual strobe deployment.

- ①Syncro Code/N [17100](#)
- ②Dual Sync Cord/N [03470](#)





MADE IN JAPAN

*New*



BLACK

SILVER



**MDX-α7RV U**

for Sony α7RV

from **07150** to **07152** **BLACK**  
from **07153** to **07155** **SILVER**

\*Port is sold separately.

## Looking to the Future Universal Design

The back acrylic panel is more than twice as large as before to improve visibility of the monitor and reduce the underwater weight. Furthermore, it is a sustainable design that can be used with newer cameras with minimal parts replacement.



## Newly designed Fiber-optic cable cover

Newly designed fiber-optic cable cover included. Prevents optical cable terminals from falling out and smartly protects light-emitting panels and cable terminals. Includes a strap to prevent loss of the cover.



## By tuning Various models can be supported by tuning

**MDX-α7RIV U**

for Sony α7RIV

from **07138** to **07140** **BLACK**  
from **07141** to **07143** **SILVER**

**MDX-α7IV U**

for Sony α7IV

from **07120** to **07122** **BLACK**  
from **07123** to **07125** **SILVER**

**MDX-α7SIU U**

for Sony α7SIU

from **07132** to **07134** **BLACK**  
from **07135** to **07137** **SILVER**

**MDX-α9I U**

for Sony α9I

from **07126** to **07128** **BLACK**  
from **07129** to **07131** **SILVER**

**MDX-α1 U**

for Sony α1

from **07144** to **07146** **BLACK**  
from **07147** to **07149** **SILVER**

### Body Size

W330×H169×D137mm

### Weight

about 2,900g

### Depth of Pressure

100m

### Material Properties

Body: Machined corrosion-resistant aluminum alloy  
Grip: Corrosion-resistant die-cast aluminum

# ▶ MDX<sup>U</sup> HOUSING SERIES

The MDX-U (universal) housing is a new series with a revolutionary system that C&C's development division, celebrating its 50th anniversary, has now fully introduced to the world. By replacing some parts or replacing button shafts, it is possible to accommodate different camera models

without modifying the housing body. This implies the possibility to support new camera models in the future with minimal upgrade costs for back panels, pedestal parts, etc. without having to purchase expensive housings every time a new camera model is released.



**MDX-α1<sup>U</sup>**  
for Sony α1



REMOVE



INSTALL



**MDX-α7RIV<sup>U</sup>**  
for Sony α7RIV

The change of compatible models will be done in our custody. For details, please inquire at the contact person in charge.

## ▶ Strobes Synchro System

Three optional strobe connection methods are available.

### 1 Optical TTL Connections

The Optical Converter S2 converts a camera's strobe light signal into LED light and synchronizes it with a YS strobe. This high performance converter is also capable of TTL auto exposure control. The Optical Converter S2 is a high-performance converter with TTL auto-dimming capability. The cost includes installation labor.



#### Optical Converter/S2

50151

A compact transmitter that attaches to the camera's accessory shoe and converts TTL signals to LED light signals.

### 2 Optical Manual Connection

For those who do not need TTL photography, manual flash can be used by connecting a fiber-optic cable.

#### Manual flash trigger/SU

50146



A device that converts strobe light emission signals into LED light. A remaining battery level check function reduces the risk of a strobe being unable to emit light due to a dead battery.

### 3 Electrical Connections

YS strobes can be electrically connected with a sync cord.

#### Strobe connector/N

50147



Extension connector for attaching a strobe connector to the housing.

#### Sync cord 2-pin connector set

50122



User-installable and interchangeable 2-pin strobe connector and sync connector.

## ▶ Extended Functional Customization Kit

This kit provides access to controls that are not available as standard, such as the drive mode dial, focus mode dial, and shooting mode lever. For details on each model, please refer to our website.



50148 for MDX-α1<sup>U</sup>

50149 for MDX-α9II<sup>U</sup>

50150 for MDX-α7IV<sup>U</sup>

50152 for MDX-α7RV<sup>U</sup>

Installation will be done by our company. For details, please contact the person in charge.





# MDX-R5

for Canon EOS R5

06198 ● BLACK



## Body Size

W345×H173×D164mm

## Weight

about 2,900g

## Depth of Pressure

100m

## Material Properties

Body: Machined corrosion-resistant aluminum alloy  
Grip: Corrosion-resistant die-cast aluminum



# MDX-Z7II

for Nikon Z7II/Z6II/Z7/Z6

06201 ● BLACK



## Body Size

W339×H169×D158mm

## Weight

about 2,700g

## Depth of Pressure

100m

## Material Properties

Body: Machined corrosion-resistant aluminum alloy  
Grip: Corrosion-resistant die-cast aluminum

## Spare O-Ring Set

Product No.	Supported models
62160	ML Port
62145	RDX Port
62101	DX Macro Port 15II, 60II, 90II, DX Extension Ring 20L, 30L, 40L, NX Port, DX Macro Port 15, 52, 87
62152	VF45 1.2x, VF180 1.2x
56290	Compact Macro Port, CX Compact Dome Port
62144	RDX Housing, MDX-α7II, EM5 MarkII
62158	MDX-α6000, α6300
62148	MDX-5D MarkIV, 80D, 7D MarkII, 5d MarkIII ver.2, 70D, D7000
62146	MDX-D850, D810, D800, D700, D500
62137	MDX-40D, PRO 5D MarkII
62147	MDX-α7III, D7100, D600, D300s, MDXL-α7IV
62155	MDX-GRD IV
62121	MDX-αU Series, α7RV, α7RIV, α7IV, α7sIII, α9II, α1, R5, R, Z7II, 5D MarkIII, DX-D50, 350D, D200, D80
10580	YS-30, 90, 110α, 01, 02, 03, D1, D2, 01 SOLIS, 03 SOLIS, D3 LIGHTNING, D3 MarkII LIGHTNING, D3 DUO
17210	Synchro Code/N, Dual Sync Code/N
62134	MDX-RX100III, RX100II, RX100, DX-1G, 2G
62169	DX-6G



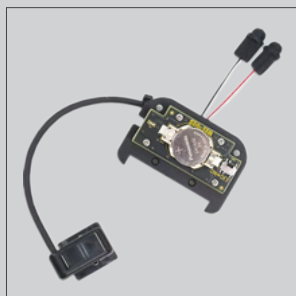
## Leak Alarm Unit [46135](#)



This alarm unit allows you to check waterproofness on land by monitoring the internal pressure by making the inside of the housing negative pressure. When an air leak (change in internal pressure) is detected, an LED lamp warns the user that there is a factor that could cause flooding before entry, thus preventing accidents before they happen. In the unlikely event of water entering the housing underwater, the leak sensor reacts and warns with an LED indicator.

- Measure the air pressure inside the housing and the presence or absence of water ingress every 0.2 seconds (200ms). The inside of the housing is constantly monitored.
- The air pressure value is converted to a 20°C value to make a judgment. Pressure fluctuations caused by heat generated by the camera or changes in water temperature will not cause malfunctions.
- The battery life is approximately 250 hours with the power on, allowing for a long period of use with a single battery replacement.
- Battery life is approximately 250 hours with the power on, allowing for long-term use with a single battery replacement.

## Manual Flash Trigger



A device that converts strobe light emission signals into LED light. The remaining battery level check function reduces the risk of a flash failure due to a dead battery.

\*Only available with manual flash.  
[Operating time] Approx. 100 hours  
\*CR1632 battery is not included.

- ① Manual Flash Trigger/CN [50144](#)
- ② Manual Flash Trigger/S [50145](#)
- ③ Manual Flash Trigger/SU [50146](#)

- ① CN Compatible Housing MDX-D810,D7100,D500,D850,Z7,Z7II,5DmarkIII ver.2,5DmarkIV,R5
- ② S Compatible Housing MDX-α7II,α7III,α7IV
- ③ SU Compatible Housing MDX-α7RVU,α7IVU,α7RIVU,α1U,α9IIU,α7SIIIU

## Optical Converter



A compact transmitter that attaches to the camera's accessory shoe and converts TTL signals to LED light signals.

- ① Optical Converter for MDX/S2 [50151](#)
- ② Optical Converter for MDX/N1 [50126](#)
- ③ Optical Converter for MDX/C2 [50142](#)
- ④ Optical Converter for MDX/CR [50143](#)

**\*S2 only: Installation with housing in place.**

- ① S2 Compatible Housing MDX-α7RVU,α7IVU,α7RIVU,α1U,α9IIU,α7SIIIU,α7II,α7III,α7IV
- ② N1 Compatible Housing MDX-D810,D7100,D500,D850,Z7,Z7II
- ③ C2 Compatible Housing MDX-5DmarkIV,5DmarkIII ver.2
- ④ CR Compatible Housing MDX-R5

## Viewfinder VF180 1.2x

[46112](#)



Straight-type viewfinder compatible with both RDX and MDX housings. The magnification of the viewfinder is magnified by 1.2x, which is effective for checking focus and composition. The lens consists of 8 elements in 6 groups of optical glass for excellent color reproduction, and the interior is filled with nitrogen gas to prevent condensation.

\*Tools necessary for installation are included.  
\*Some vignetting may occur depending on the model used.

## Viewfinder VF45 1.2x

[46111](#)



45° viewfinder compatible with MDX housing using an amici prism. Magnification of 1.2x allows for precise composition and focusing. The eyepiece rotates 360° in 90° steps to accommodate a variety of shooting positions, both horizontally and vertically.

\*Tools necessary for installation are included.  
\*Not compatible with RDX series housings.  
\*Slight vignetting may occur depending on the model used.

## Drying Agent OZO

[62168](#)



Four times the moisture absorbing power of silica gel.  
Packaged in aluminum packs of 5.

[Size] 60×10mm  
[Content by Volume] 0.55g

## 0.5x interchangeable Pick-up Finder

[46108](#)



Reduces vignetting in the viewfinder image. Recommended mainly for wide-angle photography and other situations where checking the entire composition is important.

\*Depending on the camera used, vignetting may occur in the four corners of the viewfinder.

## 0.8x interchangeable Pick-up Finder

[46104](#)

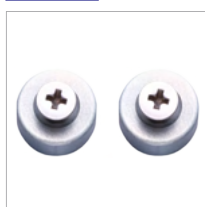


Recommended for those who are nearsighted or who want to make sure that the center of the lens is in focus for macro photography, etc.

\*Vignetting occurs in the four corners of the viewfinder.

## Replacement Zinc Pieces

[46116](#)



Corrosion inhibitor for housing.  
Pack of 2.

## Silicone Grease

[01900](#)



This item is indispensable for O-ring maintenance.

[Main Component] Silicon  
[Content by Volume] 4.5g

## O-ring Remover

[01920](#)



Tool for removing O-rings without scratching them when cleaning or greasing them.

## Housing Lanyard IV

46137



This new type of lanyard is convenient for carrying a housing. It can be attached to all RDX and MDX housings via Grip-Stay II.

[Effective Length] 320mm

## Grip Extensions

22143

GUNMETAL

22144

YELLOW



Extension to increase the distance between the grip and housing body by 8mm. Suitable for people with large hands. 2 pcs. with special mounting screws.

## Ergo-Grip ver.2

22137



Replacement grip for housing. It features a grip that fits comfortably in both hands.

[Size] W77×H146×D53mm  
[Weight] 192g (per Grip)  
[Depth of Pressure] 100m  
[Material] Corrosion-resistant die-cast aluminum

## Float Arm Handle

46124

BLACK

46132

PINK



Multi-purpose float for buoyancy adjustment that can be used as a handle/arm.

[Material] Polyethylene  
[Depth of Pressure] 50m  
[Operating Temp.] 1~40°C  
[Size] W256×H76×D62mm  
[Buoyancy] 280g

## Float Arm Handle Mounting Bracket set

46130



A set of mounting hardware to use the float arm handle as a handle.

[Material] Stainless steel, Synthetic rubber  
[Weight] 96g (2sets)  
[Accessories] Hexagonal wrench, Instruction manual

## SA8 Fixed Ball Base Mounting Bracket Set

46133



Fittings for attaching the SA8 fixed ball base to the float arm handle.

[Material] Stainless steel  
[Weight] 25g  
[Accessories] Hexagonal wrench, Instruction manual

## ML Hand Strap

46118



For improved hold of compact camera housings.

[Material] Neoprene

## Grip Plus

22142

YELLOW

22145

GRAY



Attachment that attaches to the grip of the housing for a firm grip. Simply push it into the concave portion of the grip for easy attachment.

## Strobe Connector/N

50147



Extension connector for attaching a strobe connector to the housing.

## M16 Connector

46134



By attaching to the expansion connector of the housing, M16-compatible accessories such as external monitors from other manufacturers can be used.

## DX Housing Body Cap

51280



## ML Housing Body Cap

46120



**SEA&SEA**  
THE UNDERWATER IMAGING COMPANY

DX DOME PORT 210AR

30152 ACRYLIC COATING



[Size] 250×104mm  
[Weight] 1,310g  
[Depth of Pressure] 80m  
[Material] Body: Corrosion-resistant aluminum alloy (Anodized aluminum alloy, Anti-reflective coating on inside)  
Dome: Special optical resin (anti-reflection coating on inner surface)  
Hood: ABS resin

DX DOME PORT 210

30151 ACRYLIC



[Size] 250×104mm  
[Weight] 1,310g  
[Depth of Pressure] 80m  
[Material] Body: Corrosion-resistant aluminum alloy (Anodized aluminum alloy, Anti-reflective coating on inside)  
Dome: Special optical resin (anti-reflection coating on inner surface)  
Hood: ABS resin

DX DOME PORT 150

30150 ACRYLIC

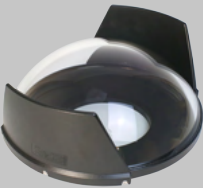


[Size] 174×79.5mm  
[Weight] 410g  
[Depth of Pressure] 60m  
[Material] Body: Corrosion-resistant aluminum alloy (Anodized aluminum alloy, Anti-reflective coating on inside)  
Dome: Special optical resin (anti-reflection coating on inner surface)  
Hood: ABS resin

DX Glass Dome Port 200AR

30142 GLASS COATING

New

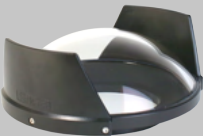


[Size] 220×99mm  
[Weight] 1,620g  
[Depth of Pressure] 100m  
[Material] Body: Corrosion-resistant aluminum alloy  
Dome: Optical glass  
Hood: ABS resin

DX Glass Dome Port 170

30141 GLASS COATING

New



[Size] 181×78mm  
[Weight] 820g  
[Depth of Pressure] 60m  
[Material] Body: Corrosion-resistant aluminum alloy  
Dome: Optical glass  
Hood: ABS resin

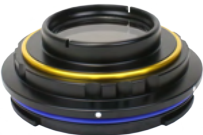
Please refer to our WEB site for port system chart.



DX Macro Port 15II

30146 GLASS COATING

New



[Size] 128×48mm  
[Weight] 340g  
[Depth of Pressure] 100m  
[Material] Corrosion-resistant aluminum alloy (Anodized aluminum alloy)  
Toughened glass (multi-coated)

DX Macro Port 60II

30147 GLASS COATING

New



[Size] 128×93mm  
[Weight] 470g  
[Depth of Pressure] 100m  
[Material] Corrosion-resistant aluminum alloy (Anodized aluminum alloy)  
Toughened glass (multi-coated)

DX Macro Port 90II

30148 GLASS COATING

New

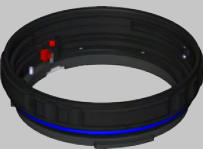


[Size] 128×123mm  
[Weight] 550g  
[Depth of Pressure] 100m  
[Material] Corrosion-resistant aluminum alloy (Anodized aluminum alloy)  
Toughened glass (multi-coated)

DX Extension Ring 20L

30143

New



[Size] 132×35mm  
[Weight] 170g  
[Depth of Pressure] 100m  
[Material] Corrosion-resistant aluminum alloy (Anodized aluminum alloy)

DX Extension Ring 30L

30144

New



[Size] 132×45mm  
[Weight] 220g  
[Depth of Pressure] 100m  
[Material] Corrosion-resistant aluminum alloy (Anodized aluminum alloy)

DX Extension Ring 40L

30145

New



[Size] 132×55mm  
[Weight] 280g  
[Depth of Pressure] 100m  
[Material] Corrosion-resistant aluminum alloy (Anodized aluminum alloy)

Dome Port Cover L

46139



DX Dome Port 210AR/DX Dome Port 210

Dome Port Cover M

46138



DX Glass Dome Port 200AR

Dome Port Cover S

46140



DX Glass Dome Port 170AR/DX Dome Port 150

ML Port Rear Cover

46121



DX Port Rear Cover

51260





# AMBASSADOR'S GALLERY

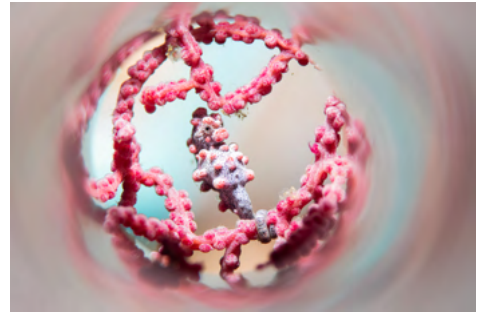


Photo by Mike Bartick [saltwaterphoto.com](http://saltwaterphoto.com)







MADE IN JAPAN



## DX-6G

for RICOHWG-80 / 70 / 60 / 50

**06666** Camera and Housing Set

**06197** Housing only

### Equipped with underwater-only Mermaid mode

Mermaid mode is available to suppress blue blur when shooting underwater. Mermaid movie mode can be used when shooting movies.



Program mode

Mermaid mode

### SS bayonet Wide Conversion Lens/WCL06

**52152**



This allows the user to capture a wider area for more powerful images. A bayonet mount is used.

[Size] 97mm×50.5mm  
[Weight] 400g  
[Focal length magnification] 0.6x  
[Underwater view angle] max. 94°  
[Depth of Pressure] 60m



Without WCL06

### M52 Mount Adapter for DX-6G

**52153**



Allows the attachment of M52 mount conversion lenses.

[Size] 121.3mm  
[Weight] 50.5g  
[Material] Corrosion-resistant aluminum alloy



With WCL06

#### Body Size

W165×H93×D61mm

#### Weight

about 605g

#### Depth of Pressure

55m

#### Material Properties

Body: Polycarbonate resin  
Grip: ABS resin

## SA8 Double Ball Arm S

22112



Precision arm with both light weight and high rigidity machined from aluminum alloy.

[Length] 143mm

[Weight] 60g

[Material] Corrosion-resistant aluminum alloy

## SA8 Double Ball Arm M

22113



Precision arm with both light weight and high rigidity machined from aluminum alloy.

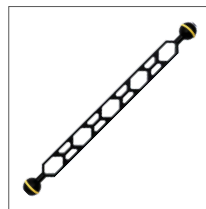
[Length] 223mm

[Weight] 80g

[Material] Corrosion-resistant aluminum alloy

## SA8 Double Ball Arm L

22114



Precision arm with both light weight and high rigidity machined from aluminum alloy.

[Length] 323mm

[Weight] 110g

[Material] Corrosion-resistant aluminum alloy

## SA8 Ball Clamp II

22138



The ball clamp can be used in two ways by rearranging the parts.

[Size] W66×H71×D26mm

[Weight] 97g

[Material] Corrosion-resistant aluminum alloy

## SA8 Strobe Head S

22115



As a joint between the end of an arm and a YS series strobe.

[Length] 68.5mm

[Weight] 41g

[Material] Corrosion-resistant aluminum alloy

## SA8 Strobe Head M

22126



As a joint between the end of an arm and a YS series strobe.

[Length] 121.3mm

[Weight] 50.5g

[Material] Corrosion-resistant aluminum alloy

## SA8 Fixed Ball Base

22119



Can be attached directly to extra grips, etc.

[Height] 47mm

[Weight] 37g

[Material] Corrosion-resistant aluminum alloy

## SA8 Ball Base for Accessory Shoell SA8 Double Strobe Head

22139



Large lock nut is used. Hook plate to prevent disconnection.

[Height] 67mm

[Weight] 55g

[Material] Corrosion-resistant aluminum alloy

22129



Lighting can be branched to the left or right at the end of the armwork.

[Length] 120mm

[Weight] 70g

[Material] Corrosion-resistant aluminum alloy

## SA8 Double Ball Strobe Head

22127



Two-light lighting in the form of branching branches is possible.

[Length] 121.3mm

[Weight] 70g

[Material] Corrosion-resistant aluminum alloy

## SA8 Camera Tray + Grip

22118



Multi-type grip set with camera tray for easy holding.

[Size] W217×H130×D77mm

[Weight] 275g

[Material] Corrosion-resistant aluminum alloy

## SA8 Extra Grip

22122



Grip for additional use. Unique triangle design for a form that fits comfortably in the hand.

[Size] W52×H120×D15mm

[Weight] 111g

[Material] Corrosion-resistant aluminum alloy

## SA8 Camera Tray Extension

22121



An intermediate plate connecting the camera tray and camera tray adapter.

[Size] W35×H35×D15mm

[Weight] 38g

[Material] Corrosion-resistant aluminum alloy

## SA8 Camera Tray Adapter

22123



Adapter to connect the camera tray to the extra grip.

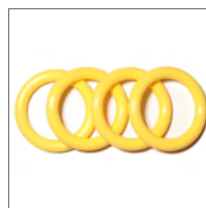
[Size] W100×H5×D35mm

[Weight] 42g

[Material] Corrosion-resistant aluminum alloy

## SA8 Spare O-ring (Yellow)

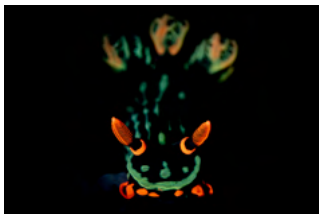
62170



Replacement O-ring set for SA8 series. 4 pieces.

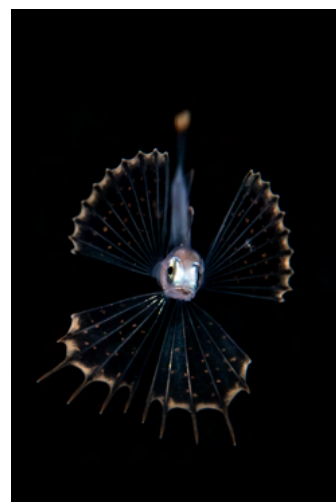
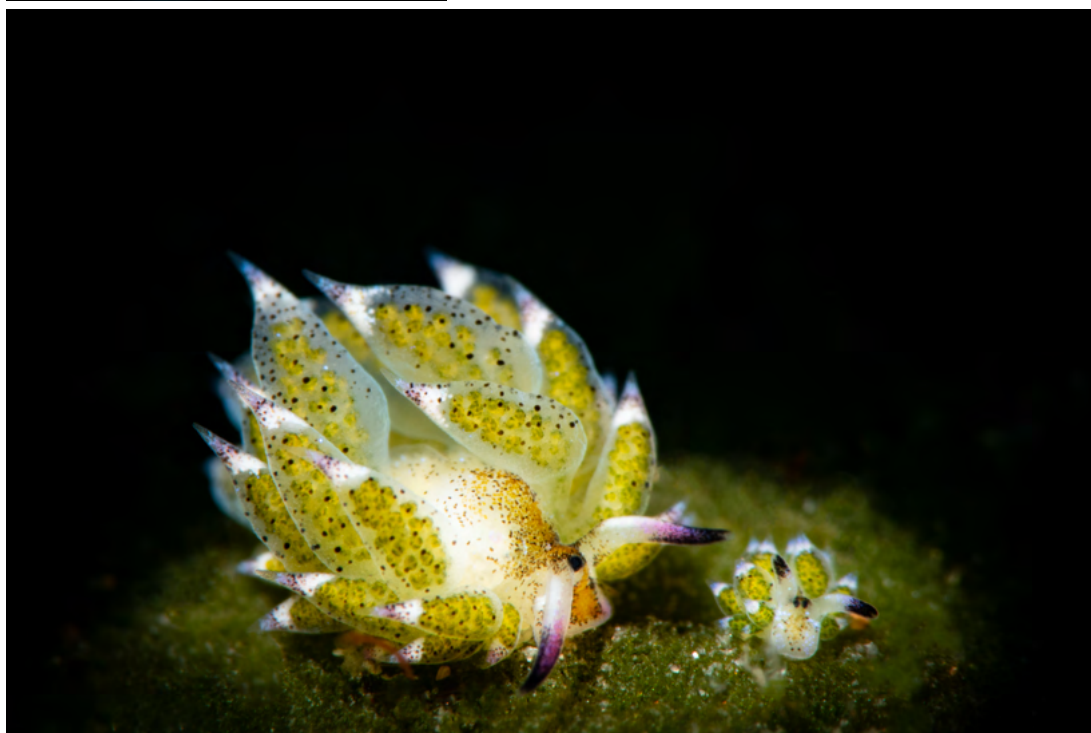


# AMBASSADOR'S GALLERY



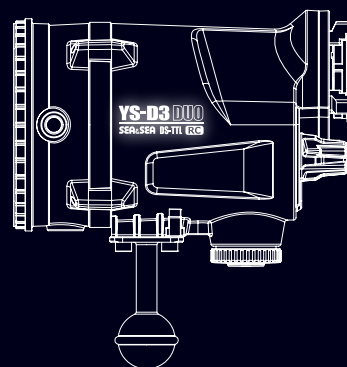
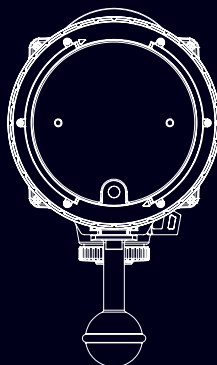
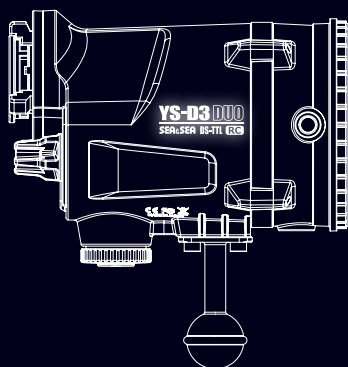
*Photo by Mike Bartick*

[saltwaterphoto.com](http://saltwaterphoto.com)



# YS-D3 DUO

## SEA&SEA DS-TTL RC



*Fisheye*

Fisheye Co., Ltd.

5-29-7, Minaminagasaki, Toshima-ku, Tokyo, 171-0052, Japan  
TEL +81-3-5996-5637 / FAX +81-3-5996-7202

**SEA&SEA**

THE UNDERWATER IMAGING COMPANY

Sea&Sea Co., Ltd.

Daini-Sueno Bld. 2F, 4-8-11, Nagasaki, Toshima-ku, Tokyo, 171-0051, Japan  
TEL +81-3-5926-9320 / FAX +81-3-5926-9321

\*The specifications of the products in this catalog are subject to change for improvement without notice.  
\*Product photographs in this catalog may differ slightly from the actual product. \*The information in this catalog is current as of March 2023. \*Company names and product names in this catalog are trademarks or registered trademarks. \*No part of the photographs, illustrations or text in this catalog may be used without permission.

Please refer to  
our WEB site  
for port system chart.



### Safety Precautions



WARNING

Please read the instruction manual before use to ensure correct and safe use.

\*Do not use power supplies, voltages, connection cords, or AC adapters other than those specified. Doing so may cause fire or electric shock. \*Do not use the product in a malfunctioning state, such as when the screen does not display. Doing so may cause fire or electric shock. \*Do not use the product under abnormal conditions such as water or foreign objects getting inside, smoke coming out, or strange smells. Doing so may cause fire or electric shock.

[www.seaandsea.co.jp](http://www.seaandsea.co.jp)

2023.03